

Wireless Internet Access in only 4 steps



Start
Start your device (PC, MAC oder PDA) and activate the Wireless LAN interface.



Wireless LAN Network
Connect to the WLAN. Search for available SSID and select „Wiology“



Browser
Start your Internet Browser and you get automatically to our login page.

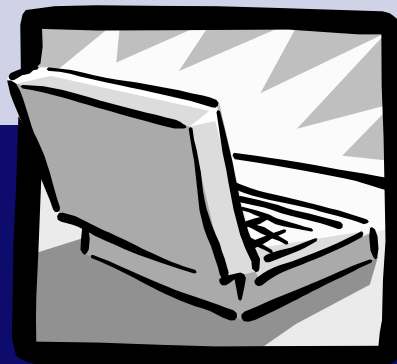


Login
Please enter the useraccount and password information you received. Alternatively you can create a new account immediately via PayPal.

You can always get back to the login page via www.my.wlan.

..... Enjoy our wireless Internet Access!

**W-LAN Hotspot
..with high-speed
accessing
Internet, email,
chat or your
company
information**



**...with High-speed
and without any
cables—access the
Internet here ...**

W-LAN Hotspot



This Hotspot is a Product and Service by
Wiology LLC
1061 Morley Ave
Atlanta, GA 30312

Phone: +1 (404)348 4768
Fx: +1 (510) 380 4834
E-Mail: info@wiology.com

-- simply connected --

Get online, it's
so easy...
so fast ...
so cheap

into the Internet,

to your Email

to your VPN



Wireless Fidelity—Wireless LAN Hotspot User Information



Here and now, use the opportunity to connect and access the Internet with High-speed und no cables. Email, Internet and VPN access to your company - easy, mobile and secure with WLAN, Wireless LAN.

You need a device with WLAN / WiFi (802.11b) access such as a laptop or PDA and a user account. Please contact us if your laptop does not support WiFi and we can provide you with adaptors.

You can receive a user account at the reception / information desk.

Start your device and activate the WLAN interface. You should get automatically connected to our „Wiology“ network.. You will receive a message at the bottom of your screen.



You might receive a warning from Windows that there is no security available. You should still accept the connection as it is standard in WLAN Hotspots. The **international security standards and recommendations** are supported and in this Hotspot!

Start your Internet browser and after you enter any web address you are directed to our login page. Please review our information and Terms of Use. This page is secured by SSL encryption and your data entry is protected. Please accept our security SSL certificate to proceed, it protects your data!



Connect to the Internet by entering your username and password. If you received your account at your location, please leave the middle field empty. You can always come back to the login page via www.my.wlan and logout or review our Terms of Use. For your convenience and safety your session will automatically terminate after 5 min. Of inactivity.

Roaming und ePayment

Roaming: An always growing number of hotspots allows you to authenticate with 3rd party roaming offerings. For authentication via Roaming partner please click the logo of your provider and enter your username and password.

ePayment : At many Hotspots you can access the Internet instantly without any sign-up via easy online ePayment. Click on one of the ePayment Logos at the login page, select your product and you receive the required login information.



If you are not connected automatically to our network,

Technical Help

the following steps might help for your configuration. Please see also the documentation of your device.

WLAN Network Configuration with Windows XP

- Click on <<Start>>
- Select <<All Network Connections>>
- Double Click <<Wireless Network Connection>>
- Select <<Properties>>
- Select the tab << Wireless Networks>>
- Select the network „Wiology“
- Gehen Sie auf <<Erweiterte Einstellungen ändern>>
- Select <<Internetprotokoll TCP/IP>>
- Click <<Properties>>
- Activate „Obtain an IP Adresse automatisch“
- Activate „Obtain DNS server address automatisch“
- Deactivate, if existing, proxy server configuration
- Search again for available networks
- Accept the connection to network „Wiology“

Browser Configuration

Internet Explorer : „Tools“ - „Internet Options“ - „Connections“ - „LAN Settings“ - all options should be deaktiv. Under „Security“ - scripting of Java Applets needs to be allowed

Additional Hints

Your input of username and password is SSL encrypted. Access from the Internet into the WiFi hotspot and your device is controlled by a firewall and additional security mechanism. The ePayment process conforms current security guidelines and is as secure as at your PC at home.

You can increase the security even further by following these simple steps:

- Treat your username and password securely
- Protect your data entry from others to view
- Deactivate settings to share devices and drives
- Use an internal firewall
- Use a current virus scanning software
- Don't leave your device out of sight

VPN, Virtual Private Network

This hotspot allows and supports the connection via secure VPN, e.g. To your companies network. We support several standard methods such as IPsec und PPTP standard. A VPN connection secures your session and data effectively from third parties.

P2P and Messenger

Please understand if your P2P or instant messenger service is not available at this hotspot. These settings are meant to support additional security as well as comfort and ease of use for all users.

Still problems ?

If you still experience any problems or have any other questions, please contact your hotspot personal and they will be able to help you. Or call our customer support number at 1-800....

Terms of Use

Directly on the login page you can find additional information as well as the terms of use at this hotspot. By accessing the network and using the hotspot you are agreeing with our terms of use.